

Gateway

User Manual

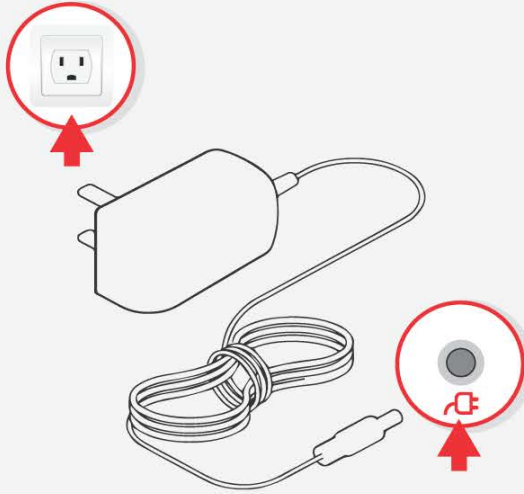
Model: GWTN156-9

Start Here

Exterior Features

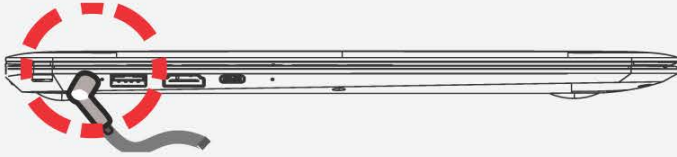
1

Plug Power Adapter Into Wall Outlet



2

Plug Power Adapter Into Laptop



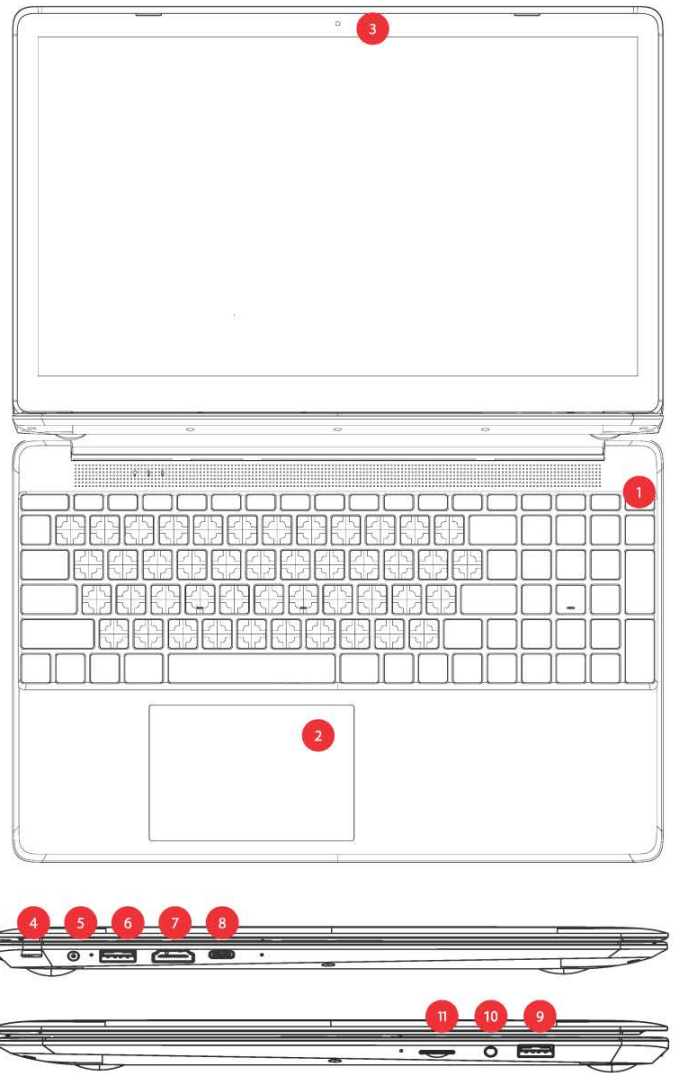
3

Press and Release the Power button



4

Follow the on screen Windows prompts to finish setting up



- 1 Power Button
- 2 Touchpad
- 3 Camera
- 4 Kensington lock
- 5 Charging port
- 6 USB 3.0
- 7 HDMI Output
- 8 USB Type-C
- 9 USB 3.0
- 10 Headphone Port
- 11 Micro SD Slot

What's in the box

- 1 Laptop
- 2 Power Adapter
- 3 Warranty Book
- 4 Quick Start Guide

Caution: The AC adapter included with your PC was specifically designed and approved for your model. Utilization of an after-market adapter may damage either the notebook or other devices connected to it. If damage is determined to have been caused by utilization of an unauthorized power supply, it will not be protected under warranty.

For our FAQ, please visit www.gatewayusa.com/support.html.

Gateway and the Gateway logo are the registered trademarks of Acer Inc. and are used under license from Acer America Corporation.

www.gatewayusa.com | Customer Service: (877) 777-0649

Notice

The information in this user's manual is protected by copyright laws, all parts of this manual, including the products and software described in it, can not be reproduced, transmitted, transcribed, stored in a retrieval system, nor translated into any language.

THE MANUFACTURER OR RESELLER SHALL NOT BE LIABLE FOR ERRORS OR OMISSIONS CONTAINED IN THIS MANUAL AND SHALL NOT BE LIABLE FOR ANY CONSEQUENTIAL DAMAGES, WHICH MAY RESULT FROM THE PERFORMANCE OR USE OF THIS MANUAL.

The illustrations in this user's manual are for reference only. Actual product specifications may vary with territories.

The information in this user's manual is subject to change without notice.

TABLE OF CONTENTS

Notice	3
Chapter 1: Preface	5
1.1 Regulations Information	6
FCC Information	7
RF Exposure Information (SAR)	8
1.2 Safety Instructions	9
1.3 Conventions for this Manual	10
Chapter 2: Getting to know the basics	11
2.1 Product Specification	12
2.2 Preparing your Computer	14
2.3 Product Overview	15
Chapter 3: Getting started	17
3.1 AC Adapter	18
3.2 Using the touch pad	19

Chapter 1

Preface

1.1 Regulations Information

* CE compliance

This device is classed as technical information equipment (ITE) in class B and is intended for living room and office use. The CE-mark approves the conformity by the EU-guidelines:

- EMC Directive 2014/30/EU,
- Low Voltage Directive 2014/35/EU(equals A2 : 2013) ,
- RF Directive 2014/53/EU



Rechargeable Battery Notice

Do not

- 1.Throw into fire or a hot oven, or mechanically crush or cutting of a BATTERY
- 2.Throw or immerse into water
- 3.Heat to more than 60°C
- 4.Repaire or disassemble
- 5.Leave in an extremely low air pressure environment
- 6.Leave in an extremely high-temperature environment

A power cord is connected to a socket-outlet with earthing connection.



The unit can be operated at an ambient temperature of max. 35°C (95°F). Do not subject it to temperatures below 5°C (41°F) or above 40°C (104 °F).

CAUTION: RISK OF EXPLOSION IF BATTERY IS REPLACED BY AN INCORRECT TYPE
DISPOSE OF USED BATTERIES ACCORDING TO THE INSTRUCTIONS.



PREVENTION OF HEARING LOSS

CAUTION: Listening to music at high volume levels and for extended durations can damage one's hearing. In order to reduce the risk of damage to hearing, one should lower the volume to a safe, comfortable level, and reduce the amount of time listening at high levels. Headsets should comply with EN 50332-2 requirements.



FCC Information

FEDERAL COMMUNICATIONS COMMISSION INTERFERENCE STATEMENT

This equipment has been tested and found to comply with the limits for a Class B digital device, pursuant to part 15 of the FCC Rules. These limits are designed to provide reasonable protection against harmful interference in a residential installation. This equipment generates, uses and can radiate radio frequency energy and, if not installed and used in accordance with the instructions, may cause harmful interference to radio communications. However, there is no guarantee that interference will not occur in a particular installation. If this equipment does cause harmful interference to radio or television reception, which can be determined by turning the equipment off and on, the user is encouraged to try to correct the interference by one or more of the following measures:

- Reorient or relocate the receiving antenna.
- Increase the separation between the equipment and receiver.
- Connect the equipment into an outlet on a circuit different from that to which the receiver is connected.
- Consult the dealer or an experienced radio/ TV technician for help.



CAUTION: Any changes or modifications not expressly approved by the grantee of this device could void the user's authority to operate the equipment.

RF Exposure Information(SAR)

This device meets the government's requirements for exposure to radio waves. This device is designed and manufactured not to exceed the emission limits for exposure to radio frequency (RF) energy set by the Federal Communications Commission of the U.S. Government.

The exposure standard employs a unit of measurement known as the Specific Absorption Rate, or SAR. The SAR limit set by the FCC is 1.6 W/kg. Tests for SAR are conducted using standard operating positions accepted by the FCC with the EUT transmitting at the specified power level in different channels.

The FCC has granted an Equipment Authorization for this device with all reported SAR levels evaluated as in compliance with the FCC RF exposure guidelines. SAR information on this device is on file with the FCC and can be found under the Display Grant section of www.fcc.gov/eot/ea/fccid after searching on FCC ID: 2AKHFAX200NG.

This device complies with Part 15 of the FCC Rules.

Operation is subject to the following two conditions:

- (1) this device may not cause harmful interference, and
- (2) this device must accept any interference received, including interference that may cause undesired operation.



CAUTION: Any changes or modifications not expressly approved by the grantee of this device could void the user's authority to operate the equipment.

1.2 Safety Instructions



- 01 Do not apply heavy pressure to the computer or subject it to any form of strong impact as this can damage the computer's components or otherwise cause it to malfunction.
- 02 Never cover or block the air vents including those located at the base of the computer. Never cover your computer or AC adapter with any object.
- 03 To keep your computer in prime operating condition, protect your work area from direct sunlight.
- 04 Do NOT expose to or use near liquid, rain, or moisture. Do NOT use the modem during electrical storms.
- 05 Do not use or expose this device around magnetic fields as magnetic interference may affect the performance of the device.

1.3 Conventions for this Manual



CAUTION: This message contains important information that must be followed for safe operation.



NOTE: This message contains information for special situations.

1.3 Conventions for this Manual

Date	Version	Revision
02/02/2020	1.0	05/10/2022

Chapter 2

Getting to know the basics

2.1 Product Specification

This User's Manual provides technical information of instructions and illustrations on how to operate this notebook for the customer. Please read this manual carefully before using this notebook.

PHYSICAL CHARACTERISTIC

•Dimension

L 14.8" x W 9.6" x H 0.8"

CPU

•Support Processor

11th Generation Intel® Core™ i5-1135G7 Processor

Total Cores: 4

Total Threads: 8

Max Turbo Frequency: 4.20 GHz

Cache: 8 MB Intel® Smart Cache

Bus Speed: 4 GT/s

TDP: 15 Watt

Configurable TDP-up Base Frequency: 2.40 GHz

Configurable TDP-up: 28 W

Configurable TDP-down Base Frequency: 900 MHz

Configurable TDP-down: 12 W

GPU

•Graphics Card

Integrated

MEMORY

•RAM

16GB LPDDR4X on board

DISPLAY

•LCD

15.6" LCD IPS Display, (1920 x 1080) non-touch

Brightness: 200-250 NITS

I/O PORTS

Kensington Security Slot	x 1
DC-in	x 1
USB 3.0	x 2
HDMI	x 1
USB-C	x 1
Headphone Port	x 1
Card Reader	x 1

AUDIO

- **Audio Codec ALC269**

Tuned by THX (Audio)

- **Speaker/MIC**

*Built-in dual speakers

*Digital Microphone support

INPUT

- **Keyboard**

Edge2Edge

US/UK plate

COMMUNICATION PORT

- **Wireless LAN**

AC b/g/n /Intel 9461 (WiFi 5) //AX201

WEBCAM

- **HD Webcam**

1MP Front-Facing Camera

POWER

- **AC Adapter**

19V 3.1A 3.5 mm

- **Battery**

11.4V 4500mAh

Number of Cells: 3

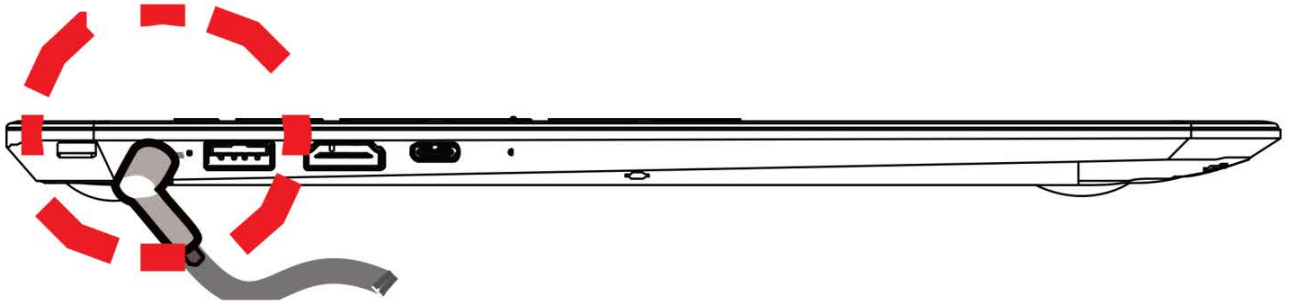
Battery Life: 10 Hours 20 Seconds



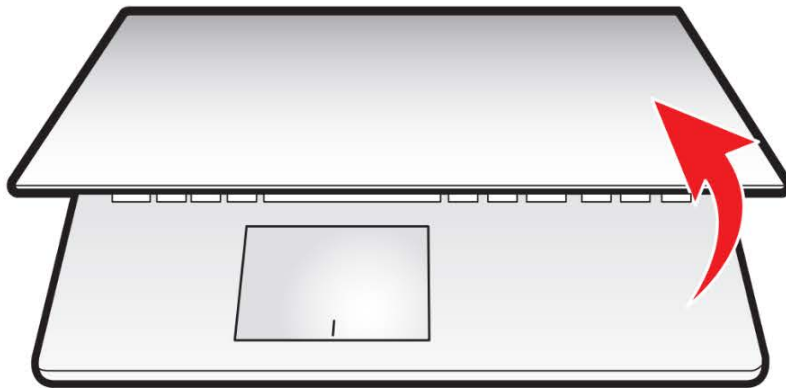
CAUTION: MODEL IS DESIGNED TO BE USED WITH THE DC INPUT: (19V 3.1A 3.5 mm)

2.2 Preparing your Computer

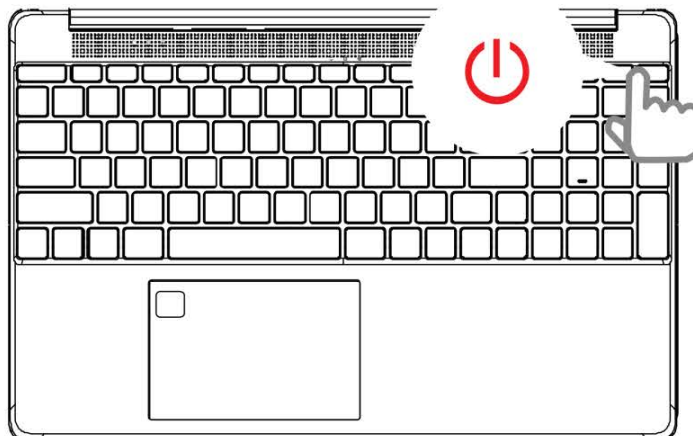
- A** Connect the AC adapter's DC output plug to the DC IN jack.



- B** The display panel can be opened to a wide range of angles for optimal viewing.



- C** Press the power button to turn on your notebook computer.



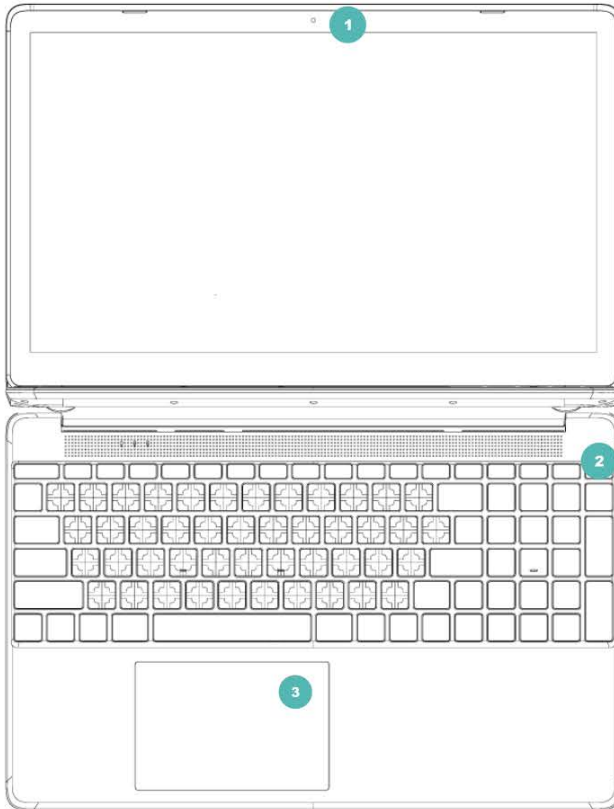
2.3 Product Overview

Please become familiar with each component before you operate the computer.

Top-Open View



NOTE: The product's color/ LED color, I/O port, indicator location, and specification will depend upon the actually shipping product.



1 Camera

A device that allows you to record video or take photographs.

2 Power Button

Used to power the computer on or off.

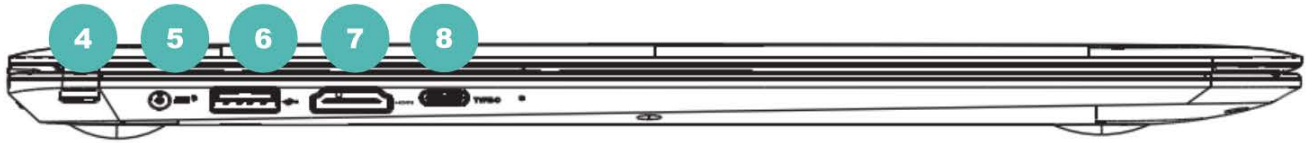
3 Touchpad

A touch-sensitive pointing device which functions like a computer mouse.



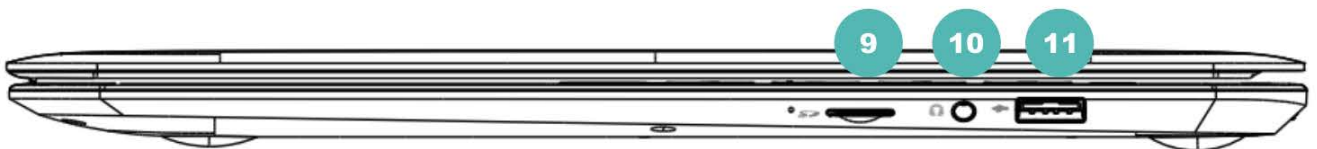
CAUTION: When you are not using the computer, keep the LCD screen closed to protect it from dust.

Left Side View



- 4 Kensington® Lock Port**
Secure the device using Kensington® Lock Port products.
- 5 Charging Port**
Used to insert the charger.
- 6 USB 3.0**
Connects an USB device (such as USB drive, keyboard or mouse) into this jack.
- 7 HDMI Output**
Connects amplified speakers, headphones or microphone into this jack.
- 8 USB-C**
Connects an USB-C device.
(such as smart phone, keyboard or mouse) into this jack.

Right Side View



- 9 Micro SD Slot**
Connects amplified speakers, headphones or microphone into this jack.
- 10 Headphone Port**
Connects amplified speakers, headphones or microphone into this jack.
- 11 USB 3.0**
Connects an USB device (such as USB drive, keyboard or mouse) into this jack

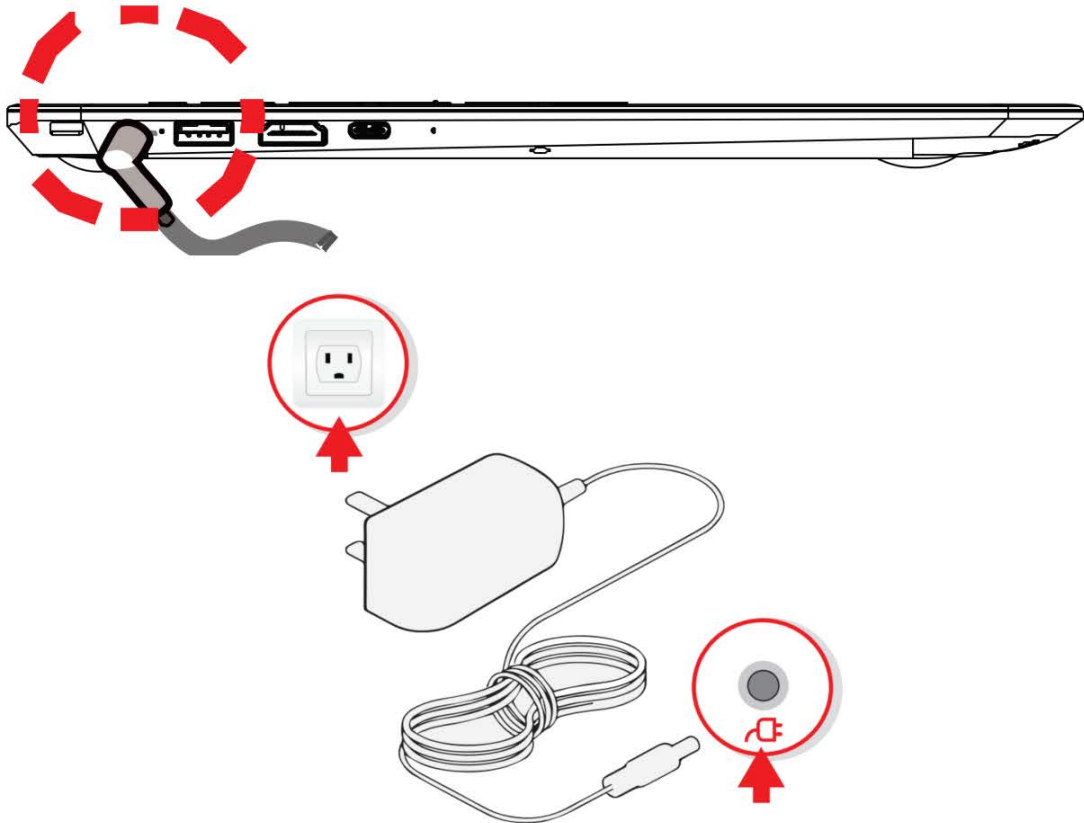
Chapter 3

Getting Started

3.1 AC Adapter

Please be noted that it is strongly recommended to connect the AC adapter and use the AC power while using this notebook for the first time. When the AC adapter is connected, the battery is being charged immediately. Attach the AC adapter when you need to charge the battery or you want to operate from AC power. It is also the fastest way to get started, because the battery pack will need to be charged before you can operate from battery power.

Note that the AC adapter included in the package is approved for your notebook; using other adapter model may damage either the notebook or other devices attached to it.



CAUTION: The use of inferior extension cords may result in damage to your notebook. Your notebook comes with its own authorized AC adapter. Use of a different AC adapter or cable extension which is not authorized for use will void warranty protection if damage to hardware is found in association to said adapter or extension cable.



NOTE: The power adapter can become hot when in use. Please be sure the AC adapter is not covered with any materials keep it away from exposed parts of your body. The AC adapter appearance may vary depending on your region.

3.2 Using the touchpad / clickpad

The touchpad / clickpad is a rectangular electronic panel located just below your keyboard. Click twice within 15x15 mm left corner will open or close (light) touchpad functionality. You can use the static-sensitive panel of the touchpad / clickpad and slide it to move the cursor. You can use the buttons below the touchpad as left and right mouse buttons.

Press the left **1** and right **2** buttons located on the edge of the touchpad / clickpad to make selections and run functions. These two buttons are similar to the left and right buttons on a mouse. Tapping on the touchpad / clickpad produces similar results.

